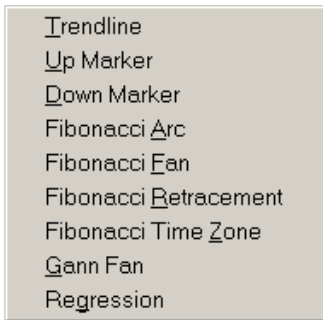


## Charts enhanced with new features

---



*Draw Attributes submenu*



*Chart right click menu*

### Additional Drawing Tools

New drawing tools have been added to the *Draw Attributes* submenu. The new tools are: Fibonacci Arc, Fibonacci Fan, Fibonacci Retracement, Fibonacci Time Zone, Gann Fan, and Regression Line.

#### â To use the new drawing tools:

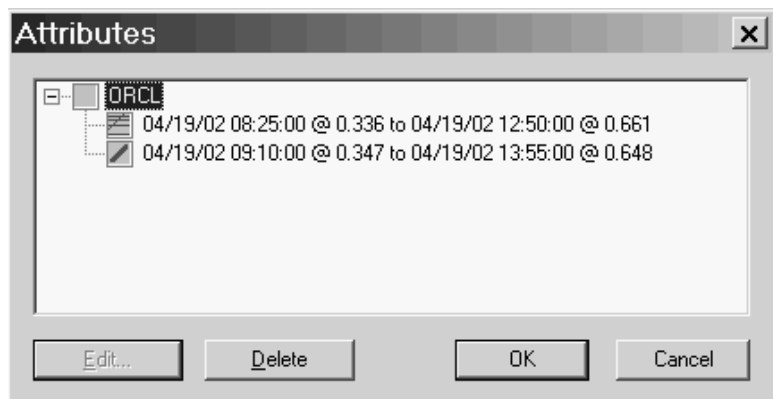
1. Click anywhere on chart with right mouse button.
2. From menu that appears, select **Draw Attributes**.
3. From next menu, select the tool you want to use.
4. Use your mouse to locate the particular study you have chosen on the chart. See *Charts*, Chapter IV, in the *TradingExpert Pro User Reference Manual* for information on creating and editing Fibonacci studies, Gann Fans, and Regression Lines.

### Editing Attributes

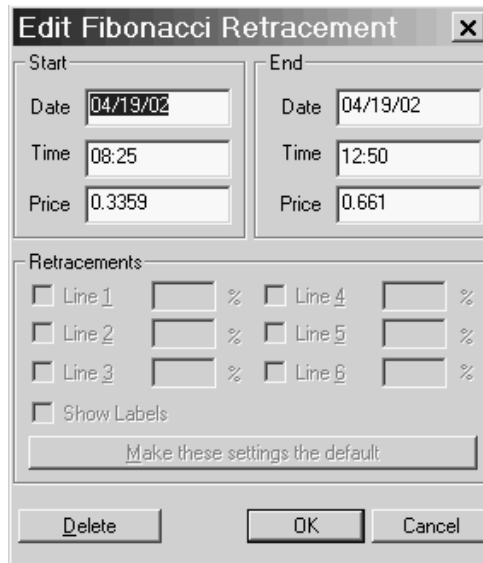
Attributes drawn on real-time charts can now be edited.

#### â To edit a chart attribute:

1. Click anywhere on the chart with the right mouse button.
2. From the menu that appears, select **Edit Attributes**.
3. Use the *Attributes* dialog box to select the chart attribute you want to change.



4. With the attribute selected, click the **Edit** command. A dialog box for the type of attribute you have selected will appear.



5. Use the dialog box to change the attribute and click **OK**.
6. When the *Attributes* dialog box reappears, click **OK** to close.

#### Removing Attributes

Attributes drawn on real-time charts can now be deleted from the *Edit* dialog box.

â To remove a chart attribute:

1. Click anywhere on the chart with the right mouse button.
2. From the menu that appears, select **Edit Attributes**.
3. Use the *Attributes* dialog box to select the chart attribute you want to remove.
4. Click **Delete** to remove the selected attribute.