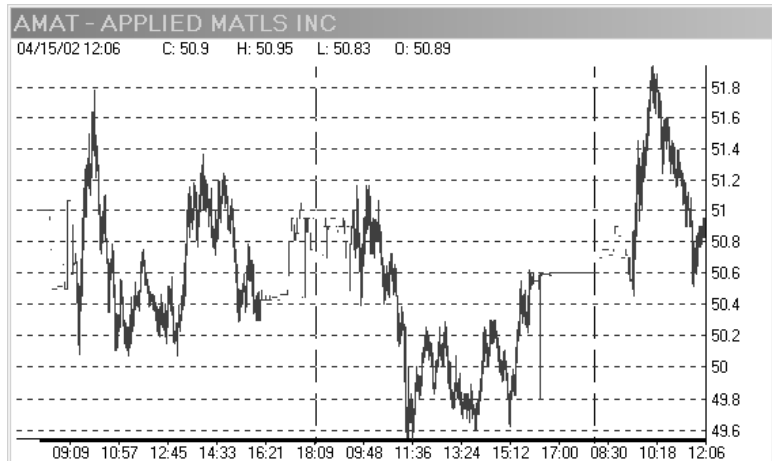


Clearly show individual trading days on intraday charts

Start and end of trading days can now be clearly shown on intraday charts. You can choose lines or shading to distinguish individual trading days.

Chart with dashed line marking start/end of days



â To add lines or shading to chart:

1. Click anywhere on chart with right mouse button.
2. From menu that appears, select **Properties**.

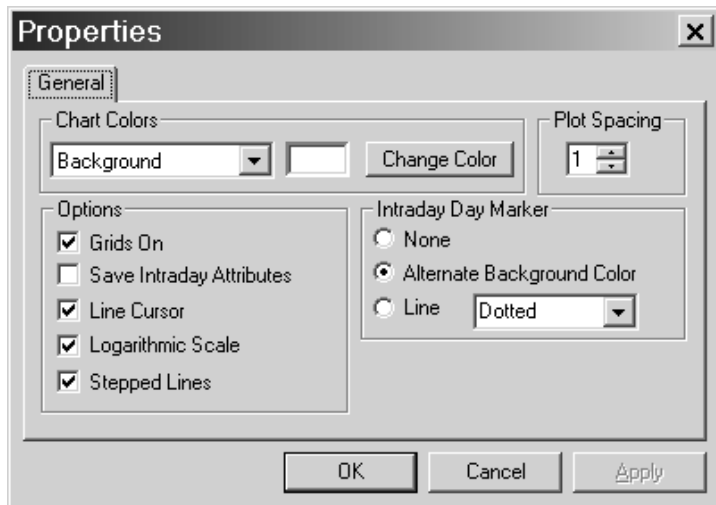


Chart Properties dialog box

3. In **Intraday Day Marker** section of *Properties* dialog box, select one of the following options:

- None
- Alternate Background Color
- Line (can also select type of line from list box)

4. Click **OK** to save change and close dialog box.

Overlay Feature now available

The overlay feature, which enables you to display Price Plots of two tickers simultaneously on the same chart, is now available for charts. An overlay plot can be added to both real-time and end-of-day charts.

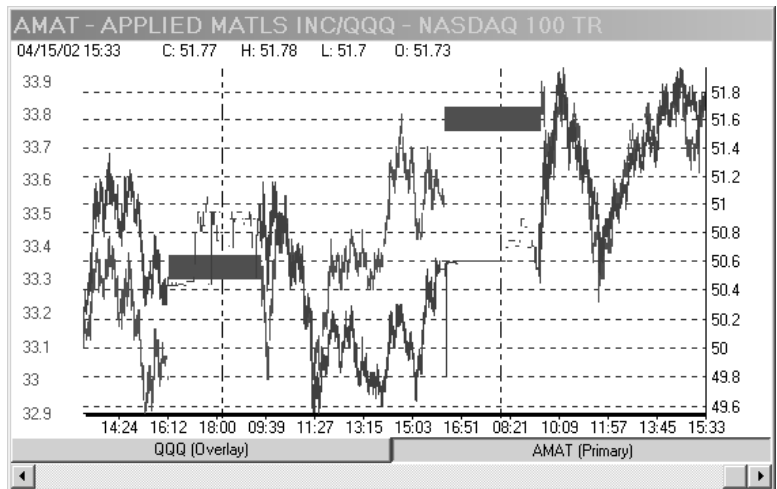


Chart of AMAT with QQQ overlaid

å *To add an overlay ticker to the current chart:*

1. Click the rightmost toolbar button (*Add Overlay Ticker*) to open the **Add Overlay Ticker** dialog box.